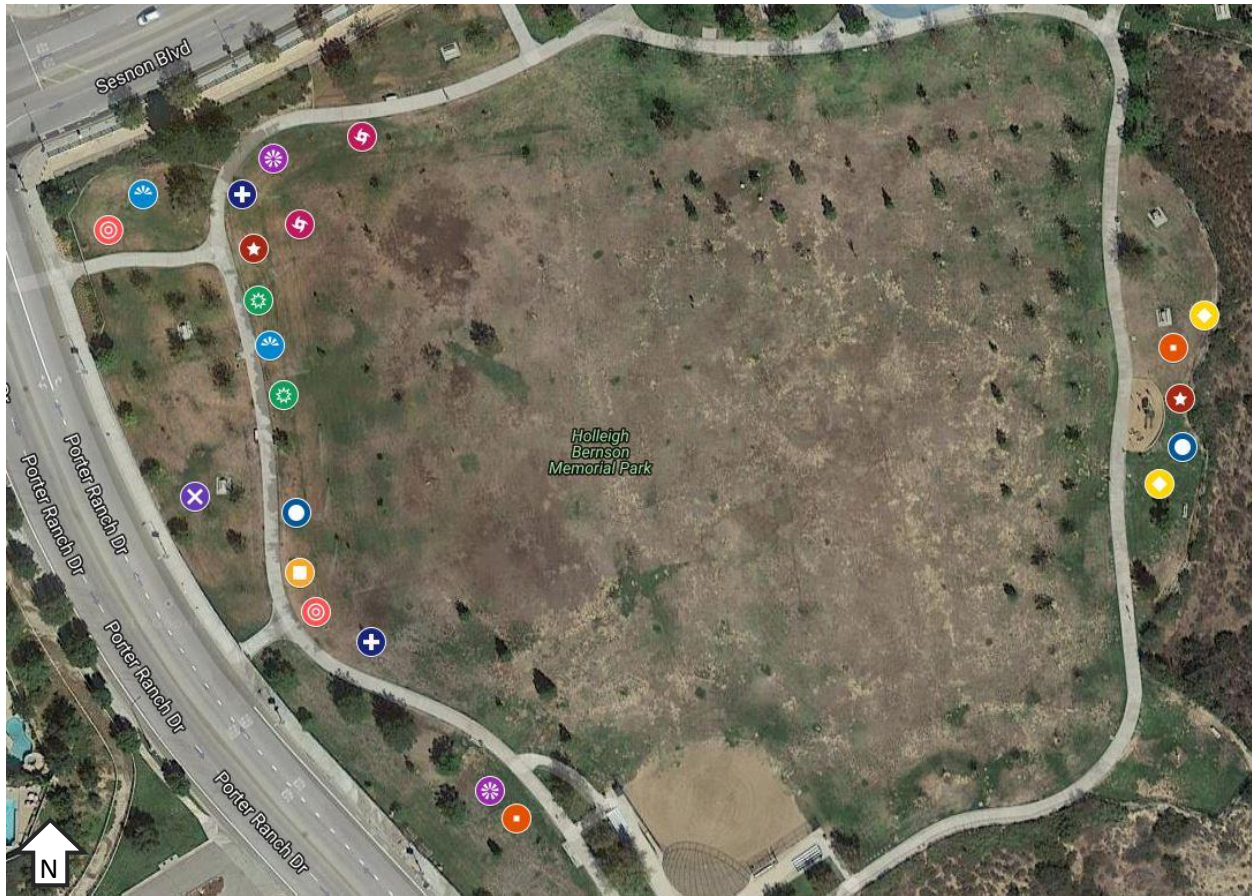


## Holleigh Bernson Park



|   |   |   |   |
|---|---|---|---|
|  | Mulga ( <i>Acacia aneura</i> )                      |  | Tecate Cypress ( <i>Hesperocyparis forbesii</i> )                 |
|  | Palo Blanco ( <i>Mariosousa willardiana</i> )       |  | Red Push Pistache ( <i>Pistacia 'Red Push'</i> )                  |
|  | Desert Willow ( <i>Chilopsis linearis 'Bubba'</i> ) |  | Desert Museum Palo Verde ( <i>Parkinsonia x 'Desert Museum'</i> ) |
|  | Ghost Gum ( <i>Corymbia papuana</i> )               |  | Thornless Honey Mesquite ( <i>Prosopis glandulosa Maverick®</i> ) |
|  | Netleaf Hackberry ( <i>Celtis reticulata</i> )      |  | Island Oak ( <i>Quercus tomentella</i> )                          |
|  | Rosewood ( <i>Dalbergia sissoo</i> )                |  | Escarpment Live Oak ( <i>Quercus fusiformis</i> )                 |

To locate the sites input the latitude and longitude listed below with a space between them into a mapping app. These will work in i-phone maps and Waze, may work in other mapping apps.

Holleigh Bernson Park: 34.291224114 -118.571605369